

ERG

Innovative Solutions



STORAGE SYSTEMS
AUTOMATION
WAREHOUSING
CONSTRUCTION
LOGISTICS



Our vision.

ERG Innovative Solutions, member of ERG Group of Companies has been active in storage systems for the past 2 decades providing high quality and guaranteed storage systems that fully meet your requirements. The purpose of the company is to design complete solutions, suitable for any kind of business.

Our solutions, with new technology products, innovative, due to their high quality and unstoppable operation, are the proof of a warranty that, for about two decades, ERG provide all its installed systems, simply and automatically, to all its customers inside and outside Greece.

This covers, to a large extent, almost all the needs in the supply chain, distribution, refrigeration, pharmaceutical, electronics, industrial production, automotive, e-commerce, fashion & etc. As a representative of some of the largest European firms in Greece, our company guarantees the best quality, based on the strictest international standards, the shortest possible implementation time.

1987

Mr. Tsogkas established the first offices in Thessaloniki.

2008

Involvement with industrial shelves & other storage systems in the industrial sector begins.

2018

The involvement of the company with the industrial mobile & fixed buildings begins.

2019

The company's trademark changed to "ERG Innovative Solutions" to emphasize the innovative solutions that we offer.

2012

Establishment of the trademark "ERG Storage Systems" as the department of the group that deals exclusively with industrial storage equipment.

2007

Establishment of the ERGOSYNTHESI CONSTRUCTIONS S.A.



4 Companies



7+ Million at projects



13 Countries of activity



3 Locations of offices



4 Board members



20+ Engineers



35+ Technicians



10 Employees (other)

Self support warehouses

- Rack-clad warehouse
- Tunnel mobile
- Modular warehouse

Automated warehouses

- AS/RS systems
- Stacker cranes for bins & boxes
- Conveyors for bins & boxes
- Stacker cranes for pallets
- Conveyors for pallets

Automatic Guided Vehicles (AGV)

- Carobot
- Sorters

Shuttles

- Radio Shuttles
- Vario sprinter

Carrousel storage

- Vertical storage Systems

Order picking systems

- Rotapick

Overhead conveyors

- Trolleyless conveyor system
- Conveyor system with trolleys
- Electric monorail system

Hanging garments

- Micro trolley system

Retrofit

Dynamic

- Carton flow shelves
- Pallet flow shelves

Mezzanine

- Mezzanine floors
- Multi tier

Cantilevers

- Heavy duty cantilever
- Light duty cantilever

Pallet racking

- Pallet back to back
- Pallet with picking
- Double depth racking
- Mobile racks
- Drive in
- Push backs systems

Medium racking

- Mini rack
- Panel shelving

Light shelving

- Errex shelving kit
- Leo shelving kit
- Mobile shelving

After sales

Services

- Engineering/Design
- Installation
- Simulation/Emulation
- Field control level
- Material flow control
- Warehouse management
- WMS Software solutions
- ERP Software Solutions



Construction & Development
Consultancy
Miebach Partner Associates



Storage Systems Solutions



Automated Systems



Systems Integrator
Project Management



Automation technology
Robots



Automation Services Support

- Greece (entire region)
- Cyprus
- UK
- Italy
- Switzerland
- Bulgaria
- Romania
- Serbia
- Croatia
- Kosovo
- Albania
- Egypt
- Turkey





STACKER CRANE SYSTEM

ELVIAL S.A. – Hellenic Aluminum Company

ISSUE

The client needed to increase the spaces of the main facilities just to make easier and faster the way that they receive the goods of its production line.

SOLUTION

Our solution was to replace the simple pallet-racks with a stacker crane system to automate the process of picking the raw materials & ready-made profiles by code basis. In this way the production receive automatically all the goods that any order needs to be produced, decreasing the time of order completed.



Kilkis District,
Central Macedonia, Greece



54 working days

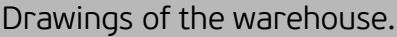
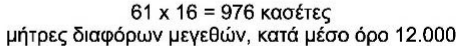


The part of the crane by the time of loading.



Stacker crane's cells for automated collection of the raw materials.







PALLET LIVE STORAGE


KRI KRI S.A. – Distribution center

ISSUE

Our client needed to increase their storage capability in short given areas in order to make easier and faster picking and storing.

SOLUTION

Our solution was to install a pallet live storage system to maximize storage capacity and decrease time of storing. Also the use of this particular system decrease the possibility of false use of pallet or damages caused by forklifts.

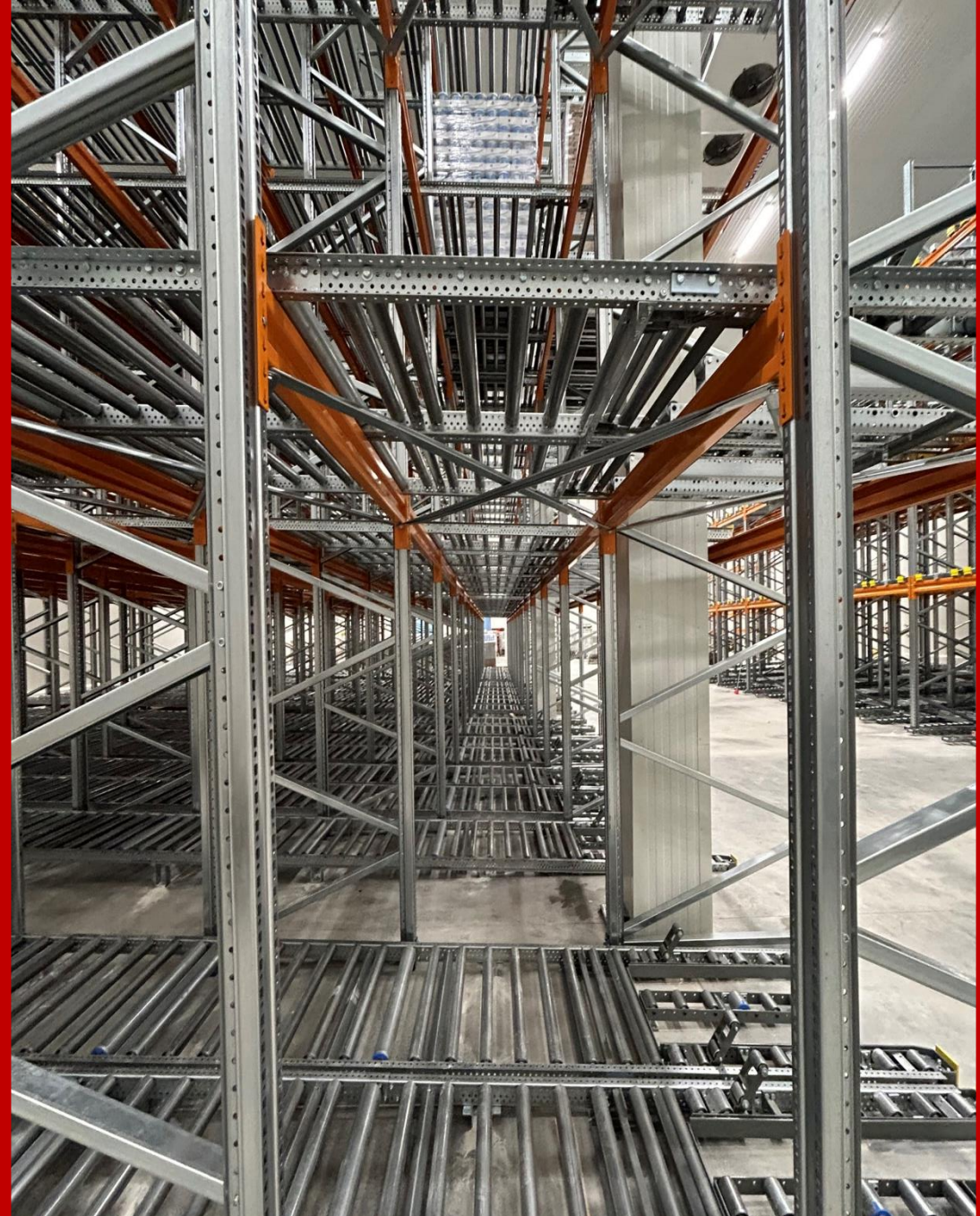
 Koropi,
Attica, Greece

 41 working days



View of two opposite blocks with common aisle.

0



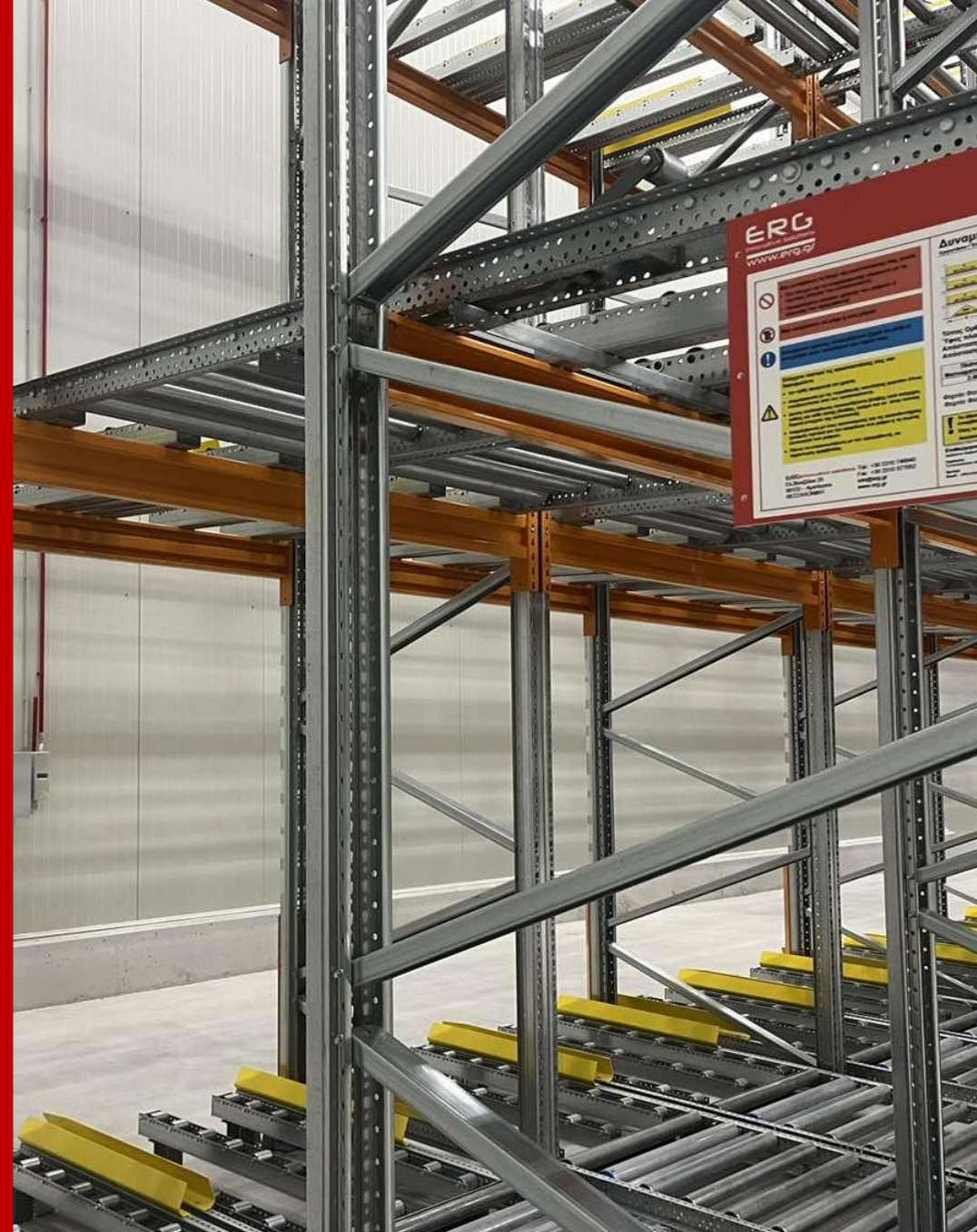
Detail of the tunnel with rollers FIFO.

2



Front view of the tunnel with rollers FIFO (unloading).

0



View of the tunnel with rollers FIFO (loading).

2

VNA PALLET-PICKING STORAGE

IRON MOUNTAIN – Storage center

ISSUE

The client needed to increase their storage capability in short given areas for pallet or picking usage.

SOLUTION

Our solution was to build a VNA pallet-picking storage system for VNA man up forklifts.



Limassol,
Cyprus



45 working days



Front view of VNA system.

0



Detail of the complexity of racks.

3



VERTICAL CARRIER FOR COATING PLANT

ELVIAL S.A. – Hellenic Aluminum Company

ISSUE

The client needed to increase their capability of delivering aluminum profiles in multiple colors as they see fit, servicing their vast production without the participation of a third party.

SOLUTION

Our solution was to build a Vertical Powder Coating plant, covering a total area of 5.000m² with a height of 9,00m. The system offers easy access on every level for inspection and maintenance. The complexity of this project, is a good example of our experience on electromechanical installations.



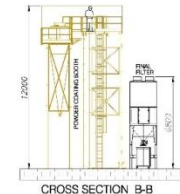
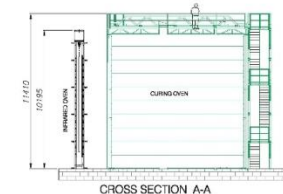
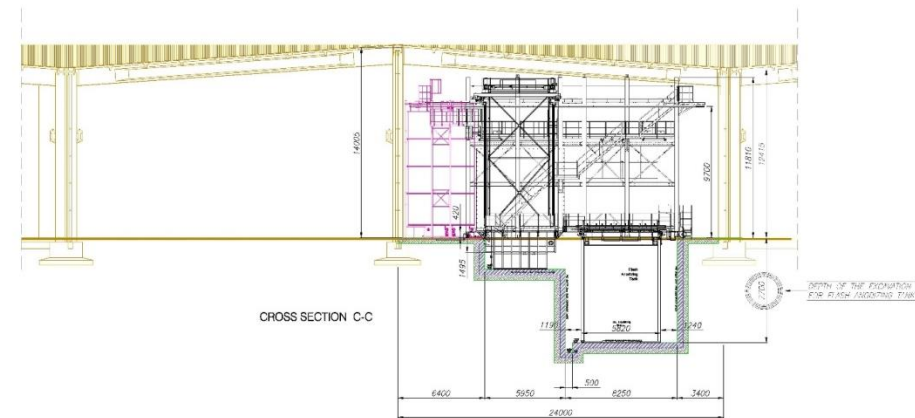
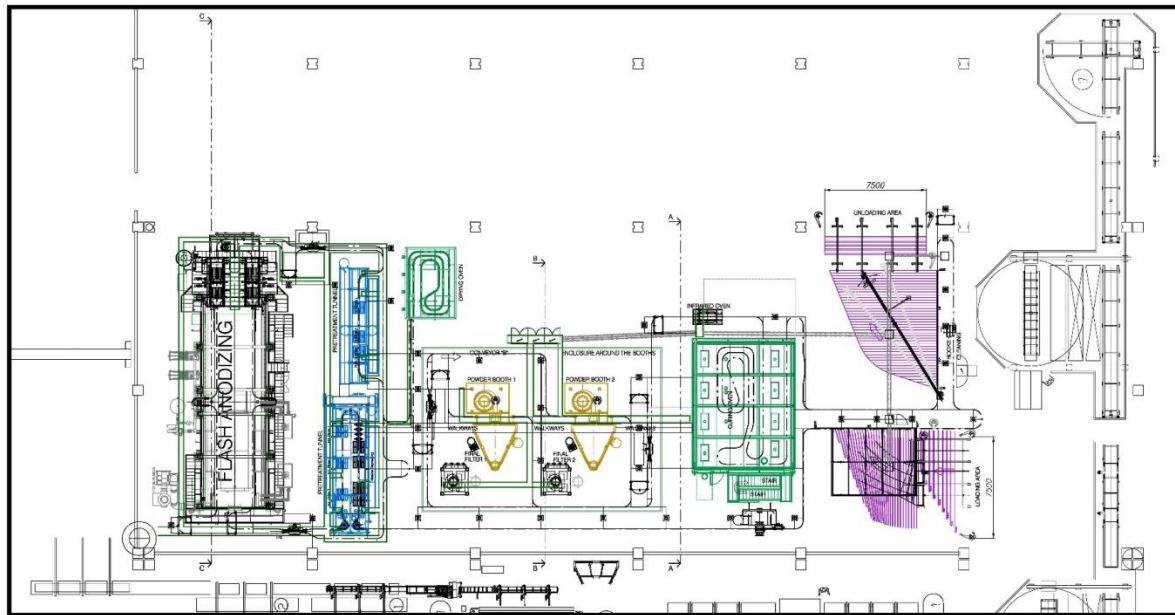
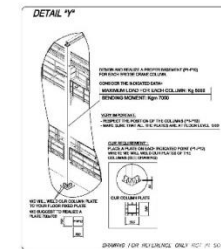
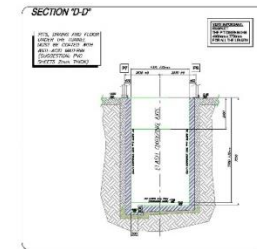
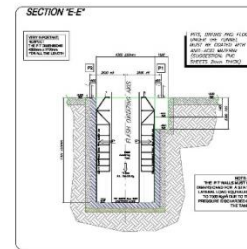
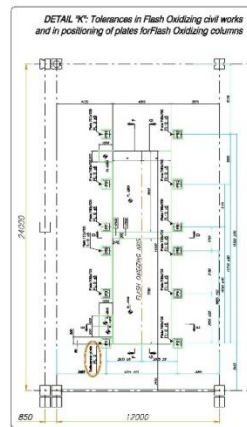
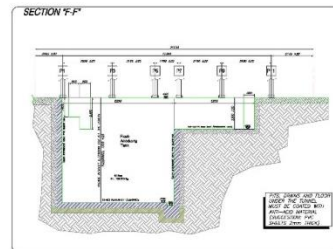
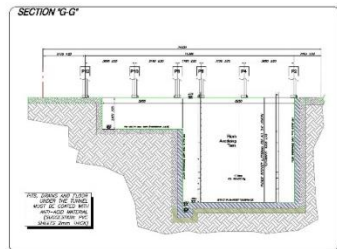
Kilkis District,
Central Macedonia, Greece



174 working days



Vertical carrier view.



- Average dimensions of the profiles: 80x30x6000 mm
- Maximum length of the profiles: 7500 mm
- Development of the principal conveyor: ~ 365 m
- Development of the secondary conveyor (depth 2) ~ 65 m
- Development of Flash anodizing 2nd conveyor: ~ 75 m
- Development of oven bypass conveyor: ~ 120 m
- Reference conveyor speed: 1,5 m/min

VERTICAL POWDER COATING PLANT
FOR ALUMINIUM EXTRUSIONS
WITH ONLY ANODIZING PRE-TREATMENT
- GENERAL LAYOUT -
L 201626 1



PALLET LIVE STORAGE FOR AGVs WITH PICKING TUNNEL

NEOKEM S.A. – Distribution center

ISSUE

Our client requested to increase their storage capability in short given areas in order to make easier and faster picking & pallet storing.

SOLUTION

Our solution was to develop an independent pallet live storage system for the fast movers with picking tunnel underneath, handling pallets, bins & boxes. The material handling is carried out using AGV's. The whole system has been designed in such a way that an iCollector AS/RS system can be added to handle the remaining codes using customized software.



Koropi,
Attica, Greece



54 working days



Detail of rollers FIFO.

0



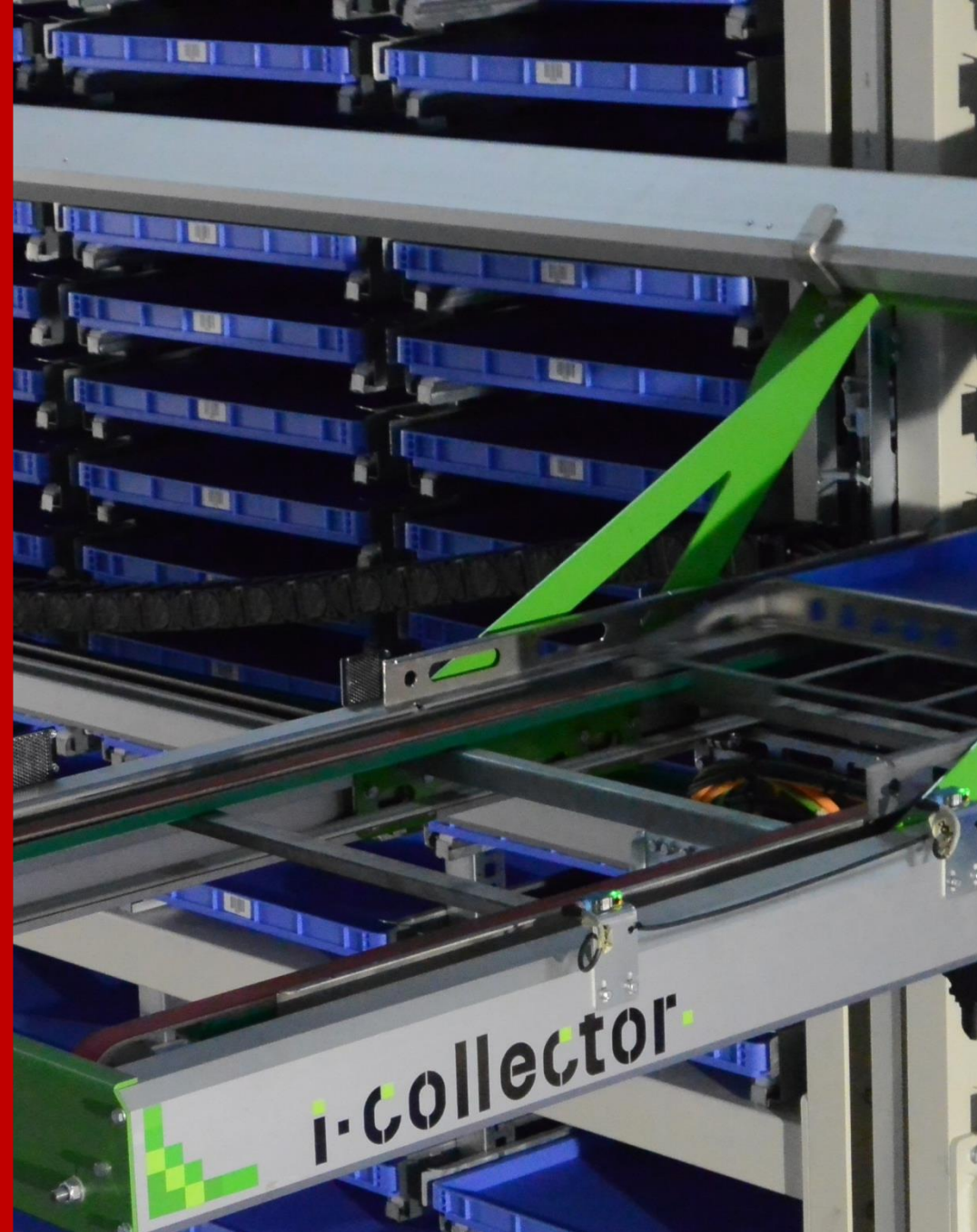
Detail of the tunnel with rollers FIFO.

5



Similar system like the one that will be added.

0



Details of the tray that carries the boxes.

5



AUTOMATED SYSTEM - PACKAGING LINE

KNAUF AMFILOCHIA PLANT

ISSUE

The client wanted to replace all existing packaging line with a new more sophisticated and environmental friendly packaging line.

SOLUTION

Our solution was to update the whole packaging area by using all new technology on this field with all necessary green efficiency standards. The complexity of this project, is a good example of our experience on complicate automation systems.



Stanos Amfilochia,
Central Greece



630 working days



Part of the new packaging line.

0



Assembly and inspection of the packaging line.

6

SELF SUPPORTED STORAGE SYSTEM WITH 3D PALLET SHUTTLES

IRON MOUNTAIN – Storage center

ISSUE

The client needed to increase their storage capability in short given areas for picking usage.

SOLUTION

Our solution was to build an internal self supported warehouse adding 3D shuttles, using the advantage of the given height.



London,
United Kingdom



63 working days



Top view of self supported system.



Detail of installation.





AUTOMATED HANGING SYSTEM

ELVIAL S.A. – Hellenic Aluminum Company

ISSUE

The client needed to handle long row material through the several production sections of the plant to increase their production time.

SOLUTION

Our solution was to construct an automated hanging & sorting system for long material. This system gives visibility for operators to control the products where they are moved at each production stage, reducing the time between production sections.



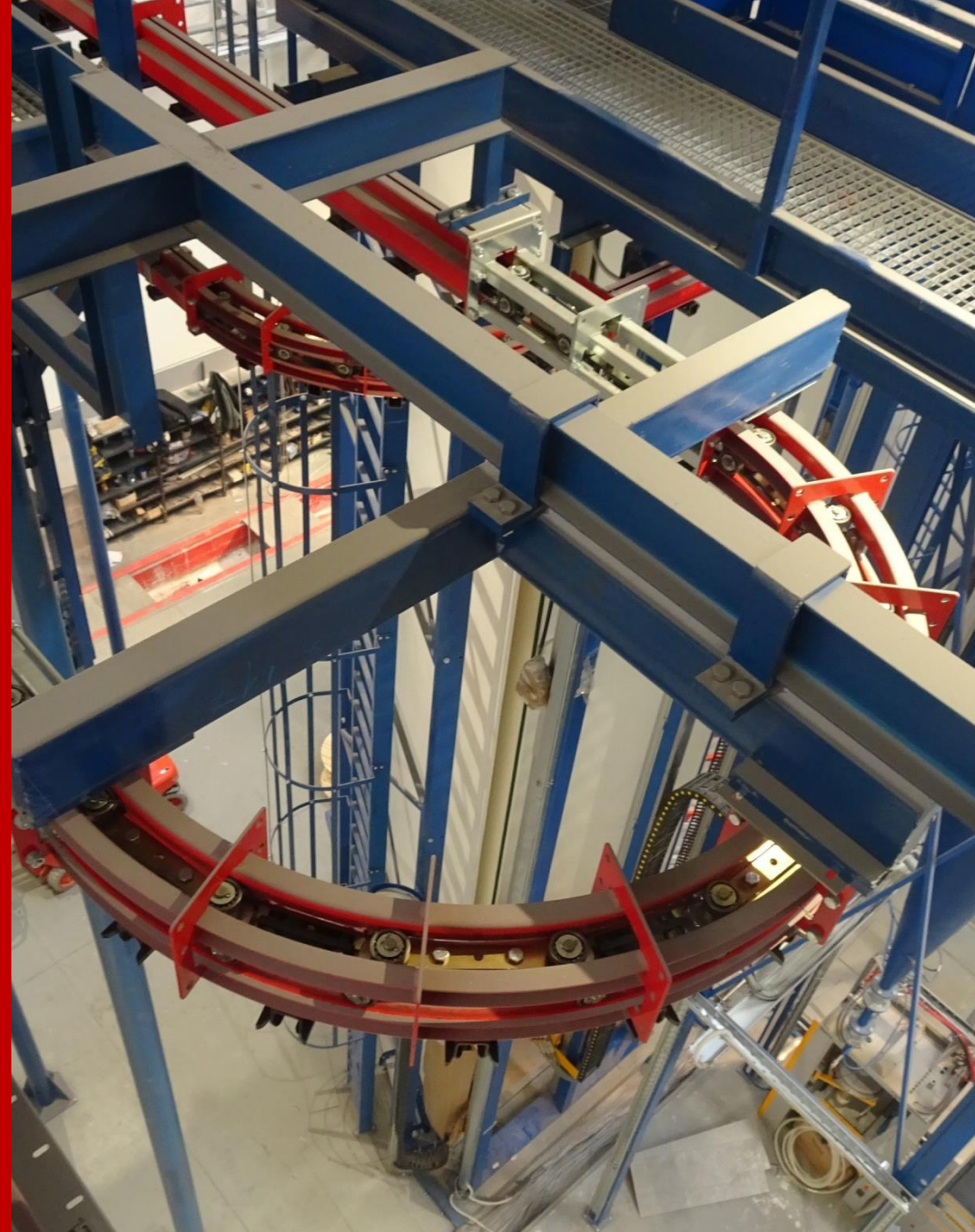
Kilkis District,
Central Macedonia, Greece



190 working days



View of the hanging chain.



View of the curved hanging chain part.





Goods-in (starting point) of the hanging chain.

HEAVY DUTY PALLET RACKING SYSTEMS

LIDL HELLAS – Distribution center

ISSUE

Our client required new facilities for its distribution center of 45.000m² in Attica to supply the stores on the Central and Southern Greece.

SOLUTION

As we received the project plans of the facilities we've created the best solution, based on the client's requirements for more than 32.000 pp, including freeze areas (-24°C).



Kalyvia
Attica, Greece

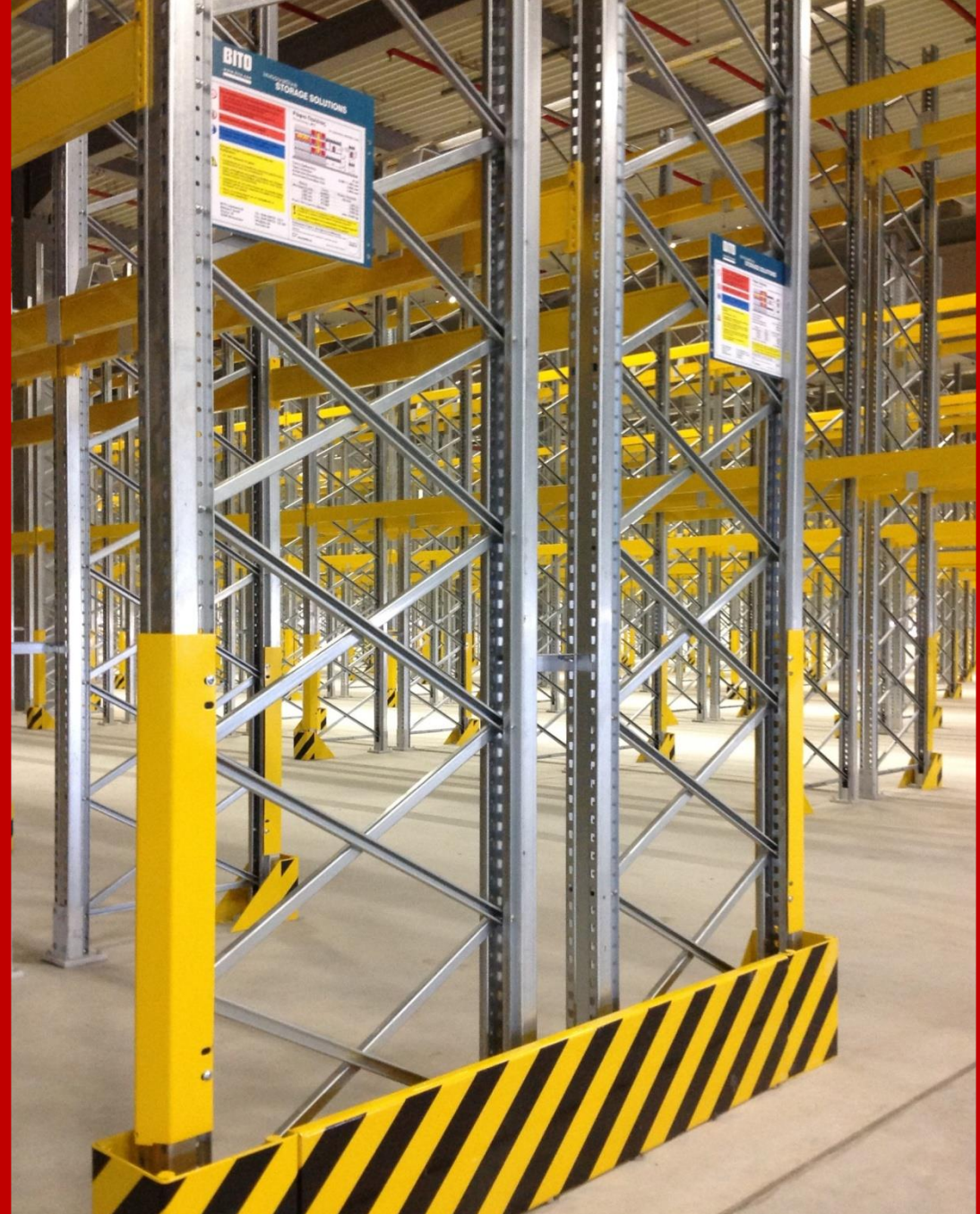


102 working days



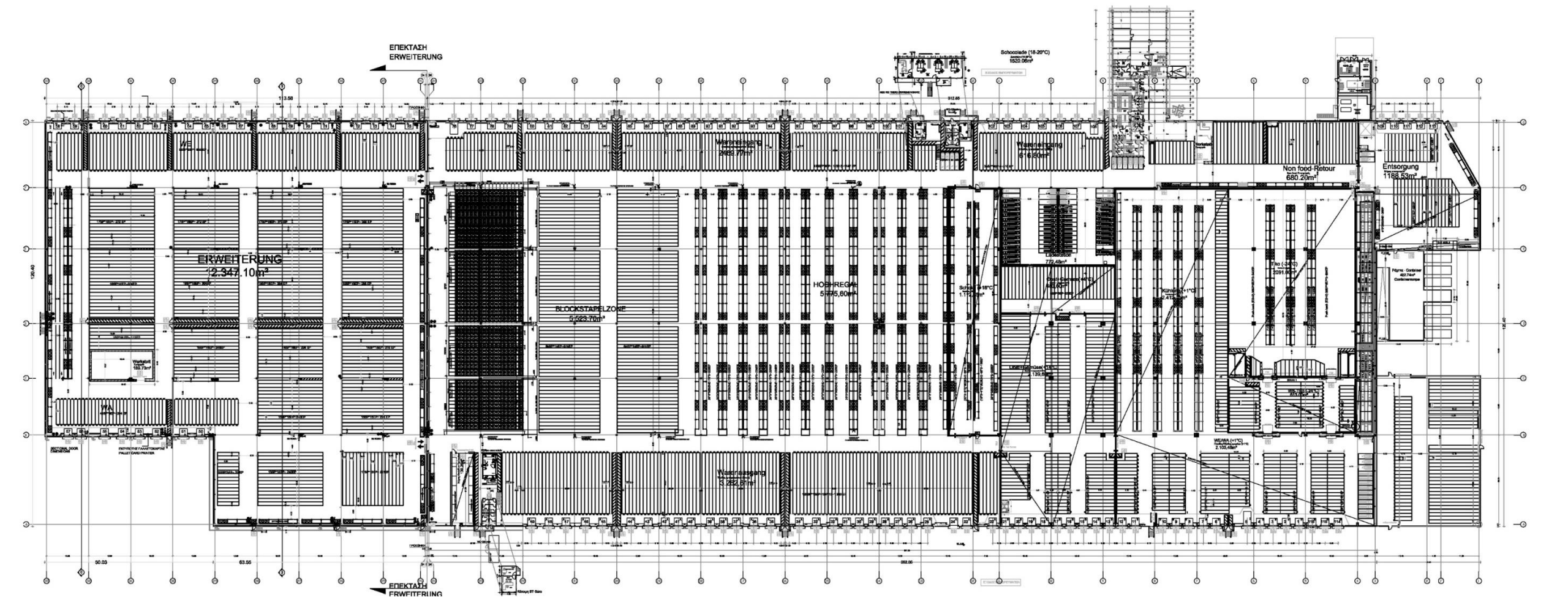
View of pallet racking system.

0



View of pallet racking system.

9





Aerial view of the warehouse.



COMPLETE WAREHOUSE OPTIMIZATION

COCA COLA 3E - Distribution center

ISSUE

The client request was to disassemble all defective storage systems and reassemble/reinstall all systems that can actually used, under certification. Moreover, to organize interior and exterior Floor marking, under EN guidelines.

SOLUTION

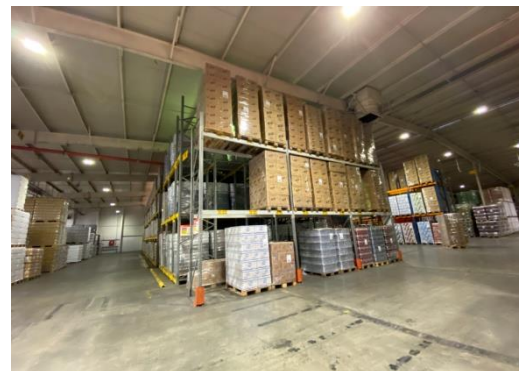
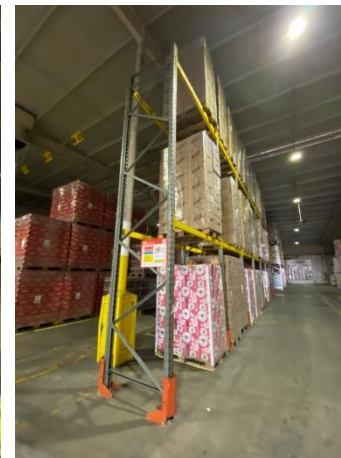
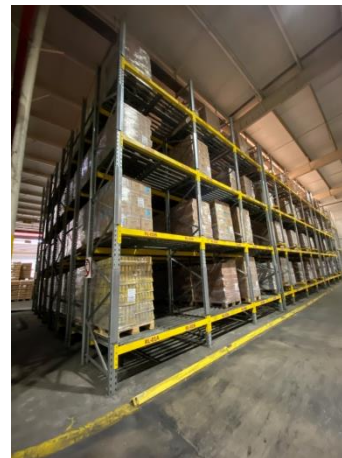
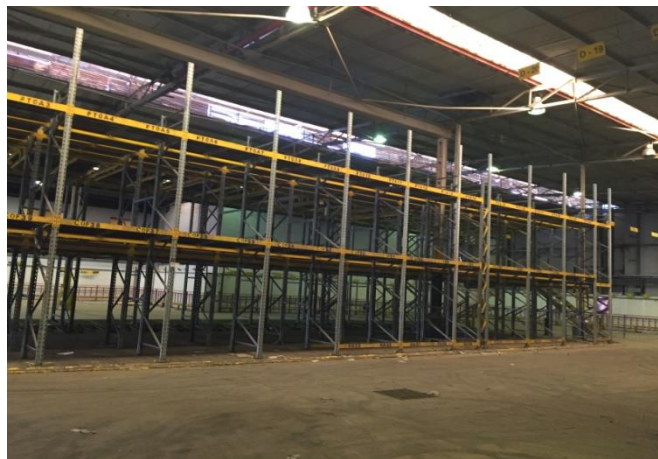
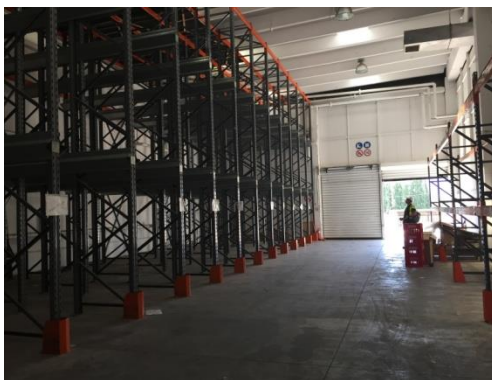
Our solution was to disassemble the completely defective storage systems, reassemble by their products, solid and useful new systems and repair all damages, after certified inspection of all remaining systems. The floor's delineation, was carried out after detailed design, under the cooperation with the warehouse technicians, for accuracy and proper use of all available space

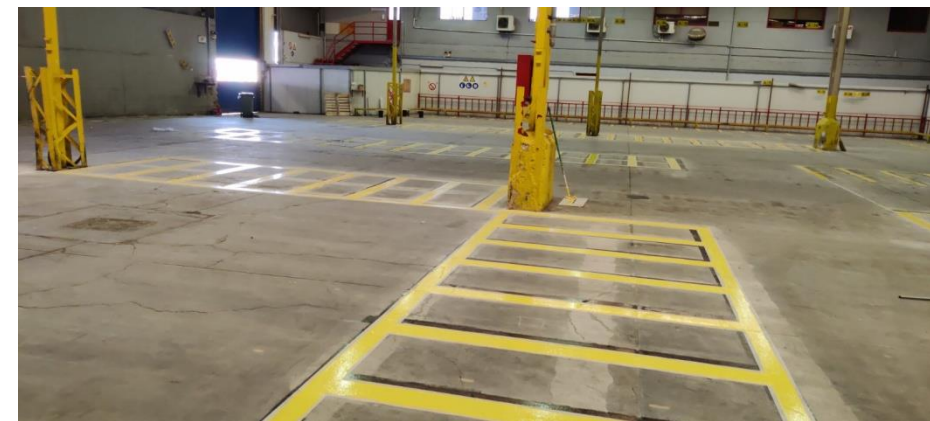
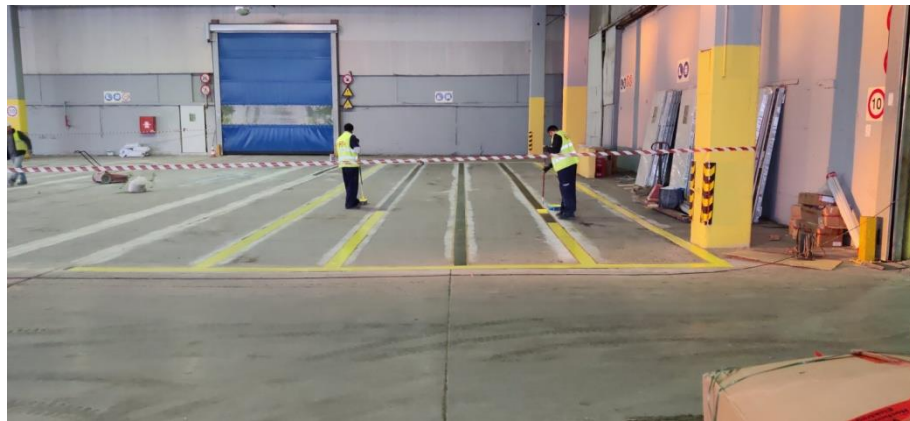
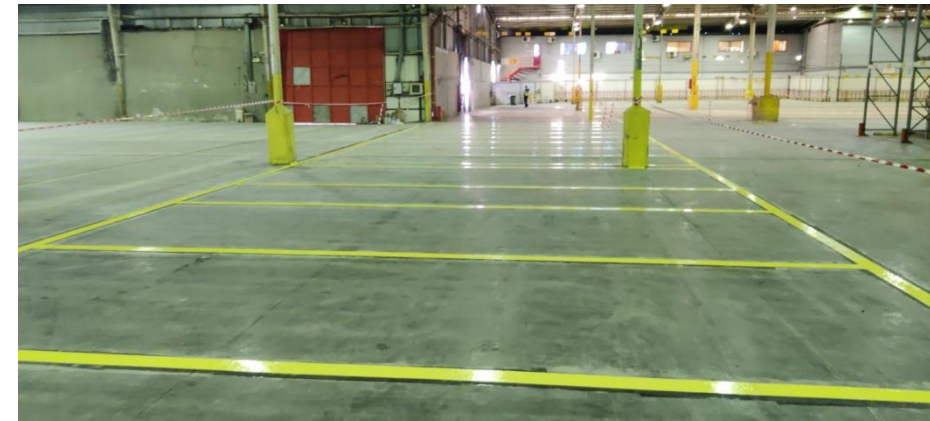
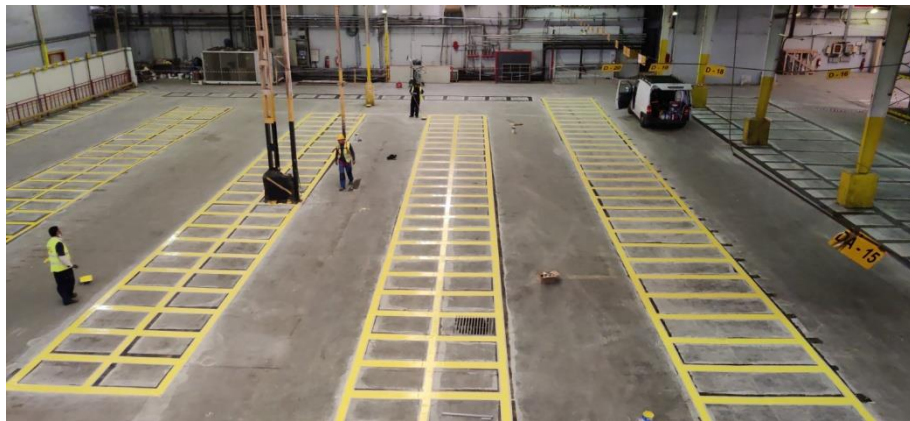
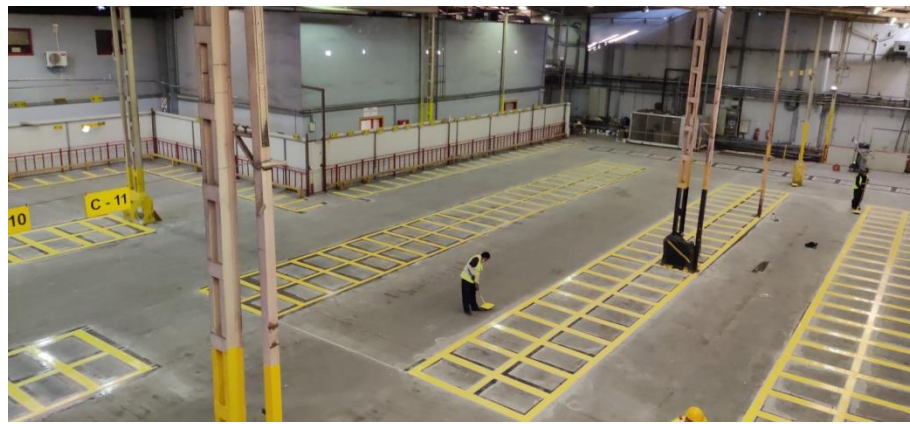


Athens,
Attica, Greece



40 working days





PALLET LIVE STORAGE ON MEZZANINE & GROUND ORDER LINES

LIDL HELLAS – Distribution center

ISSUE

The client's goal was to increase their storage capability in short given areas in order to make easier and faster the way that the store and to maintain the capability of typical supply and truck order lines.

SOLUTION

Our solution was to install a pallet live storage system, in an area of 600m² with storage capability of 2.000pp, providing the capability to use the lower area for ground order sorting lines.



Trikala,
Central Macedonia, Greece



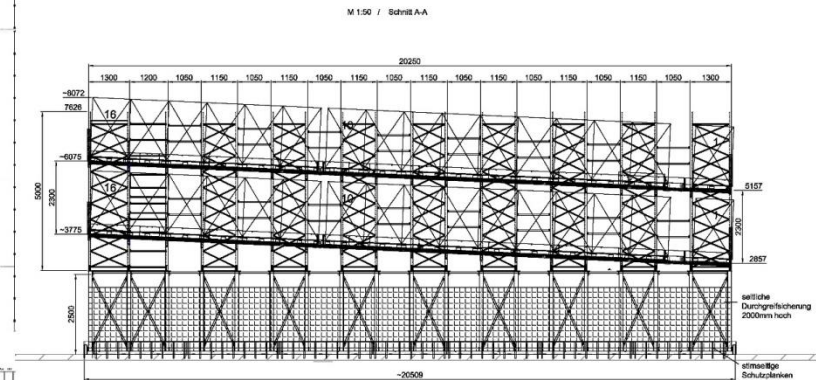
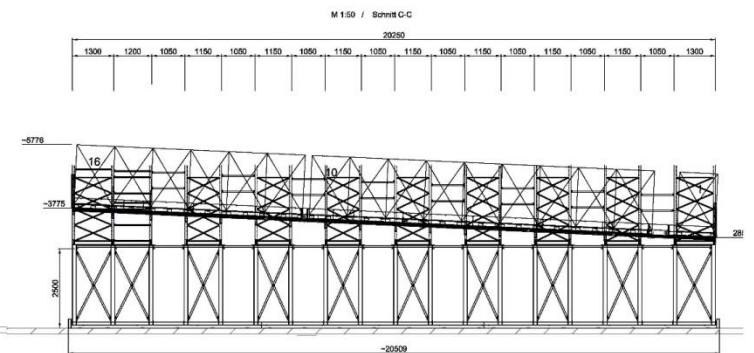
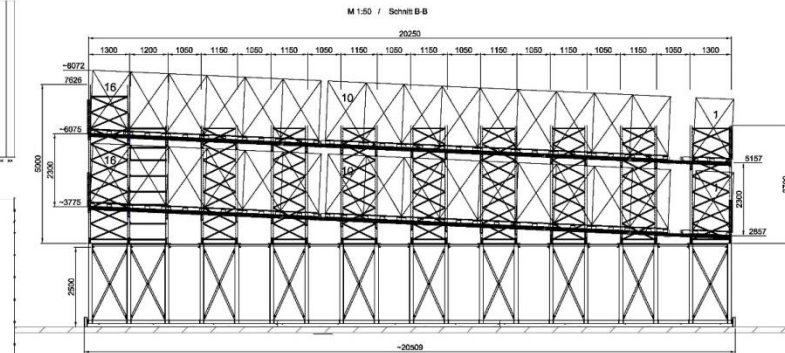
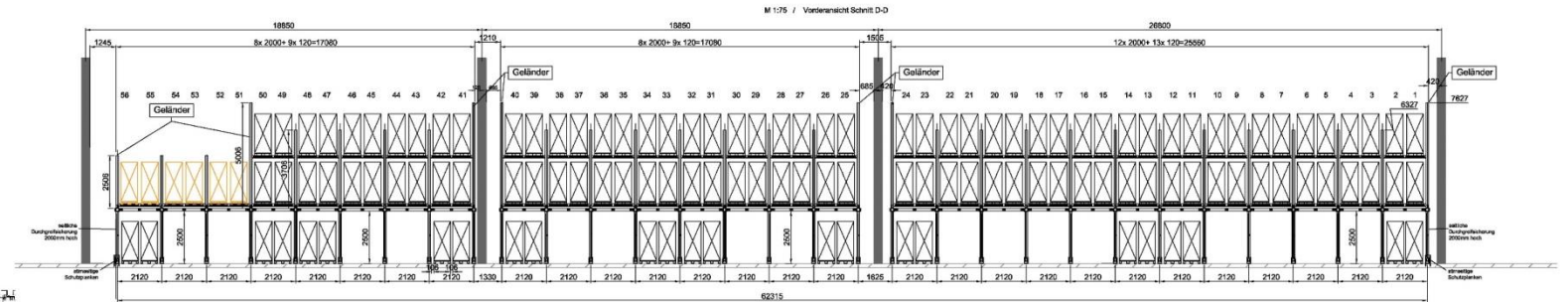
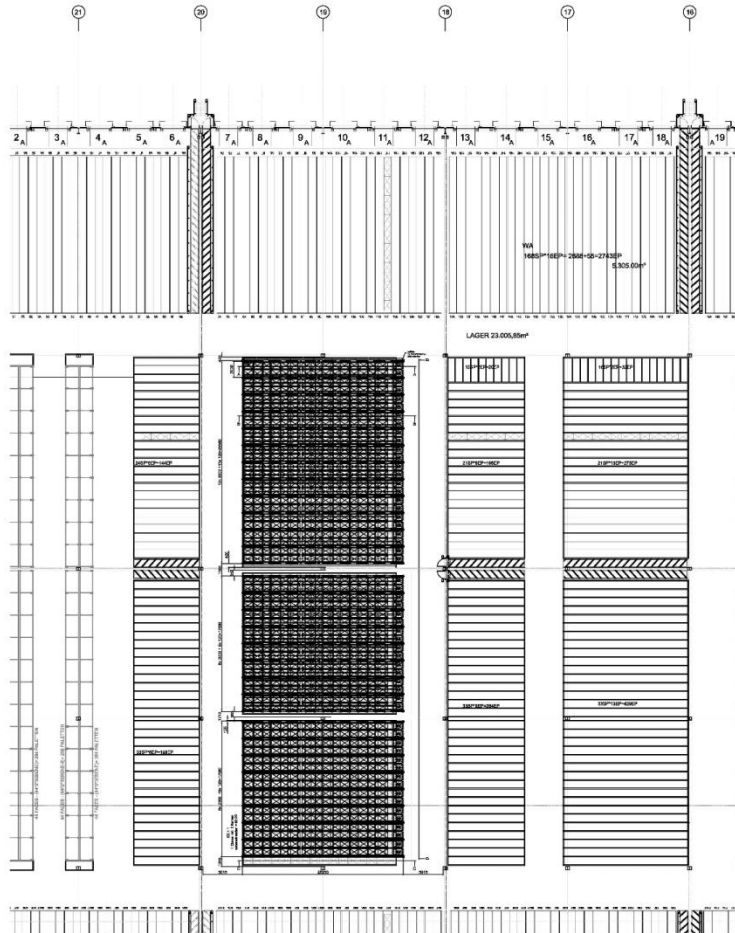
32 working days



Detail of tunnel with rollers FIFO.



View of ground tunnels (in progress).



HEAVY DUTY PALLET RACKING SYSTEMS

LIDL HELLAS – Distribution center

ISSUE

Our client required new facilities for its distribution center of 60.000m² in Central Macedonia to supply the stores on the Central and Northern Greece.

SOLUTION

As we received the project plans of the facilities we've created the best solution, based on the client's requirements for more than 43.000 pp, including freeze areas (-24°C).



Industrial Area of Thessaloniki
Central Macedonia, Greece



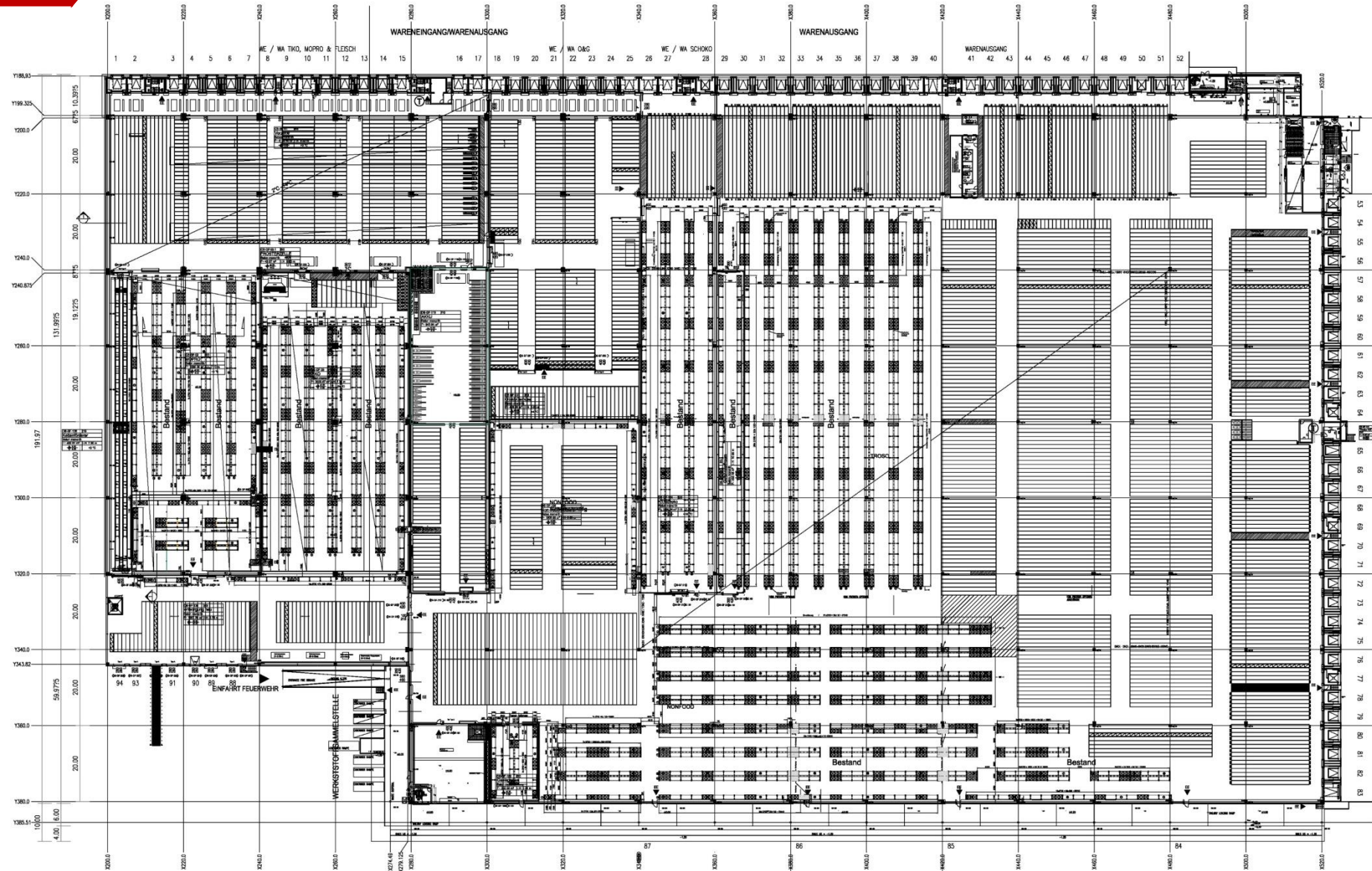
151 working days



View of pallet racking system.



View of pallet racking system.





3D SHUTTLE PALLET SYSTEM

EUROFREIGHT S.A. – 3PL Logistics center

ISSUE

The client wanted to increase their storage capability and to carry out the handling of pallets in the shortest possible time

SOLUTION

Our solution was to develop a 3D shuttle pallet system, reducing handling aisles and utilizing the maximum storage capacity of their facility. In this way we automated the operation, achieving shorter handling time and eliminating the risk of possible faults.



Nicosia district,
Cyprus



64 working days



View of the 3D pallet carrier.

1



View of the guides & of 3D pallet carrier.

3

HEAVY DUTY PALLET RACKING SYSTEMS

AB VASILOPOULOS – SUPER MARKET CHAIN

ISSUE

Our client required new facilities for its distribution center of 40.000m² in Central Macedonia to supply the stores on the Central and Northern Greece.

SOLUTION

As we received the project plans of the facilities we've created the best solution, based on the client's requirements for more than 20.000 pp, including freeze areas (-24°C).



Industrial Area of Thessaloniki
Central Macedonia, Greece



87 working days



High view of pallet racking system.



High view of pallet racking system with goods.



PALLET AND CARTON LIVE STORAGE

EUROFREIGHT S.A. – 3PL Logistics center

ISSUE

The client wanted to increase their storage capability and accommodate several SKU's, especially in bins, in short given areas in order to make easier and faster the way that the store.

SOLUTION

Our solution was to build a heavy duty pallet system for storage pallets on top and in the lower levels the usage of carton live system, for picking.



Nicosia district,
Cyprus



15 working days



Installation phase of carton live storage.



Final view of carton live storage.



HEAVY DUTY PALLET RACKING SYSTEMS

EUROLAMP S.A. - Distribution center

ISSUE

Our client required facilities for its new distribution center of 15.000m² in Central Macedonia.

SOLUTION

This was a special project since it required seismic study and the installation had taken place on a very inclined floor (2,5m difference). The system capacity was over 16.000 p.p.



Thessaloniki
Central Macedonia, Greece



98 working days



View of two opposite rows with common aisle.



Pallet racks front view (in use).



View of the intermediate bridges for forklift passage.



View of the entire warehouse.



24/7 After Sales Support

One major feature of ERG Innovative Solutions, is the capability to support every client, whenever or whatever the requirements are, providing services based on the vast experience on every type of storage system, in terms of consultancy and assembly.

Our 24/7 after sales support features are:

- Online consultancy support
- Racking systems service support
- All type Racking Spare parts support



Racking Inspection

Our customer service includes more than just delivery, installation and start-up of your facility. Apart from personal contact with our friendly and competent staff, after sales service also includes a maintenance service to ensure operational safety as stipulated by the European Standards (EN) for safety at work as well as an emergency service and immediate spare parts delivery.

Simply call our hotline!

Just as we pursue the single source strategy in our product selection, we make a point of offering the same comprehensive scope in our after sales service. Of course, many years of experience in after sales and our know-how are part of the ERG package.





ISO Certificate

Our company has been certificated with ISO 9001 which is an internationally recognized standard for quality management concerning all tasks model that when applied it ensures the expected quality in the products and services of our company, having as a main goal customer satisfaction.



Eco-friendly

ERG follows environmental friendly practices & strategies decreasing the carbon footprint, by:

- Using of safe & sustainable materials.
- Buying materials locally.
- Using green demolition and recycling practices.

Important projects of recent years



• LIDL HELLAS - ATHENS	(Warehouse 50.000 m2)
• LIDL HELLAS - THESSALONIKI	(Warehouse 65.000 m2)
• MASOUTIS SA SuperMarket chain	(Warehouse 70.000 m2)
• LIDL HELLAS - ATHENS	(Warehouse 12.000 m2)
• AB BASILOPOULOS SuperMarket chain	(Warehouse 40.000 m2)
• THERIANOS LOGISTICS CENTER	(Warehouse 50.000 m2)
• EUROLAMP S.A.	(Warehouse 15.000 m2)
• EUROFARM SA Agriculture supplies	(Warehouse 3.000 m2)
• SEAWAYS - ADIDAS Sportswear	(Warehouse 3.500 m2)
• LOGISTICS CENTER SA	(Warehouse 4.000 m2)
• COCA COLA - 3E	(Warehouse 1.000 m2)
• AGROPARTS SA Agriculture machinery	(Warehouse 2.800 m2)
• XT LOGISTICS Door and window manufacture	(Warehouse 4.000 m2)
• FIBRAN SA Insulation materials	(Warehouse 2.500 m2)
• BANK OF GREECE Money volt	(Warehouse 1.000 m2)
• TITAN SA Cement industry	(Warehouse 1.100 m2)
• DTM-DITSIOS SA Fur tannery	(Warehouse 5.000 m2)
• ELVIAL - ATHENS Aluminum manufacture	(Warehouse 1.000 m2)
• ELVIAL - KILKIS	(Warehouse 3.000 m2)
• KOUMAKIS SA Heavy machinery	(Warehouse 1.000 m2)
• AGROHOUM SA Agriculture products	(Warehouse 1.500 m2)
• KNAUF Hellas	(Warehouse 3.000 m2)
• Snt Catherine's Monastery EGYPT	
• KNAUF Cyprus	(Warehouse 2.000 m2)
• YARA Hellas	(Warehouse 1.500 m2)

invest
your
future.

welcome to the new era.



Headquarters

25 Eleutheriou Venizelou Str.
Thessaloniki, Greece, 561 23
+30 2310 746 940

Websites

www.erg.gr
www.ergstorage.eu

